

Tas Playwork gathering 2026

River Run Lodge Dover
247 Narrows Road, Strathblane TAS 7109

Sat/Sun 20/21 June 2026



Marc Armitage presents a Malarkey Event

facebook.com/marc.armitage.at.play

facebook.com/MalarkeyEvents



Tas Playwork gathering 2026

River Run Lodge QLD 20/21 June 2026

Will you be joining us at the TAS Playwork Gathering in 2026? You should be! This brochure has all the basic information for you to attend this gig.

What is it:

A residential gathering in communal huts for those from the OSHC/OOSH and the Primary School sectors to be immersed in the practice and theory of play and Playwork; and for a chance to learn and network with other playworkers.

Where is it:

It will take place at the River Run Lodge in Dover TAS (see map attached).

When is it:

Saturday 20/Sunday 21 June 2026. Participants are able to join us on Friday evening for an early start, or arrive no later than 9am on Saturday

What you will need to bring:

Just yourself and a change of clothing in case of wet weather. All bedding, meals and refreshments for Saturday and Sunday are provided.

The Wicker Man

Saturday evening will feature evening dinner and an appointment to meet The Wicker Man for music and fireside chatting.

Marc Armitage presents a Malarkey Event





Tas Playwork gathering 2026

River Run Lodge QLD 20/21 June 2026

Why should you come to the Playwork Gathering?

Modern Playwork practice has its origins in the late 1940s but its inception goes much further back into the 19th century.

Playwork is a very specific way of working with children and young people, and for the last decade, this approach has been promoted as a way of working within the OSHC/OOSH sectors by a number of key individuals and organisations within Australia and from overseas.

Playwork has also now been recognised as a valid approach to working in OSHC/OOSH in the MTOP Framework. But there is more - Playwork is an approach that children themselves value and want to see more of.

This weekend residential Gathering will show us how we can move towards making a Playwork Approach more available in our centres and schools with a series of practical and theory sessions provided by some of those that are leading the new wave of Playwork in Australia. Discussion around the campfire will also be important.

All of this will be framed with the Playwork Principals, the ethical framework for Playwork, and within current best practice.

Marc Armitage presents a Malarkey Event



Tas Playwork gathering 2026

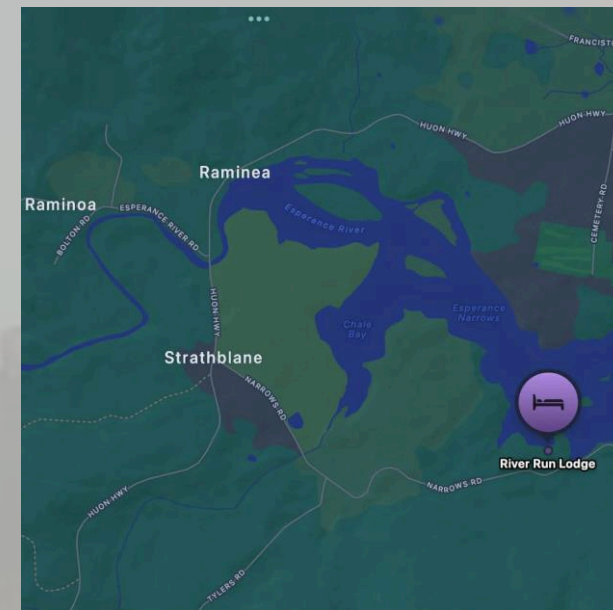
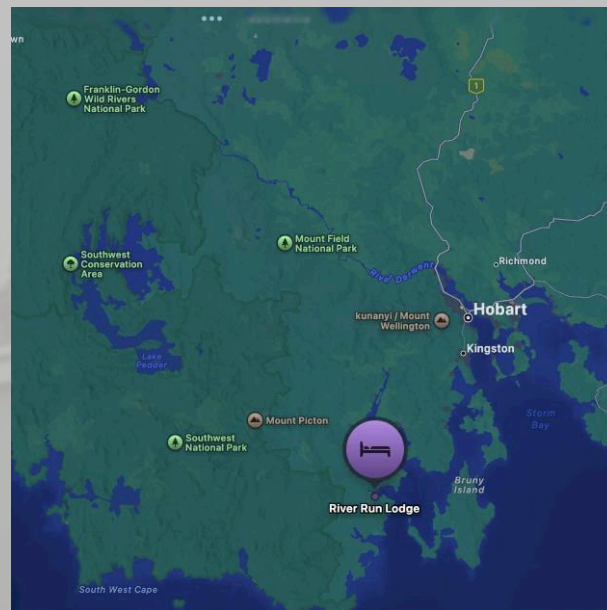
River Run Lodge QLD 20/21 June 2026

Where is it?

The gig will take place at the River Run Lodge Dover, 247 Narrows Road, Strathblane TAS 7109.

Please arrive at the venue not later than 9am on Saturday 20th OR the campsite will be available for you stay over on Friday 19th from about 3pm onwards. You will **NOT** need to bring bedding with you.

The gig will end between 12/12:30pm on Sunday 21st and please try and make sure you can stay right up to the end.



Marc Armitage presents a Malarkey Event





More than warmth: is the fire pit the anchor of a good play space?

Kylie Keene – Keen About

Fire is a fundamental, and often overlooked, component of any good play space! Whilst covering theory from a play and Playwork perspective, and its alignment to our NQF and ALF's, we will look at what else a fire affords a space beyond being warm.

This hands-on session considers what we must do before, what could be done during and what is necessary after to overcome our adult agendas. A fire pit, and its placement within a play space, has the potential to anchor and hold space for those who need it when adults simply allow it to.



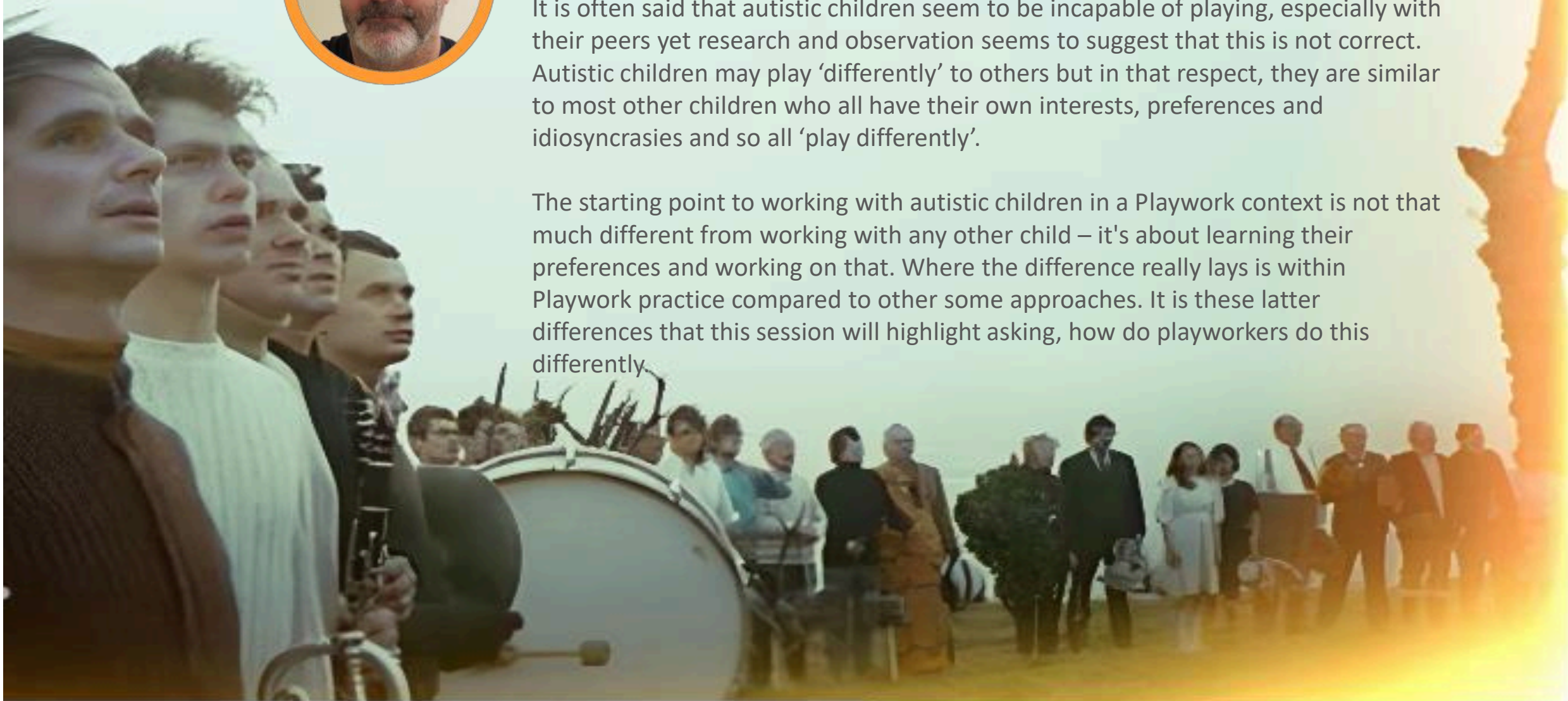


Autism from a Playwork Perspective

Marc Armitage - Malarkey

It is often said that autistic children seem to be incapable of playing, especially with their peers yet research and observation seems to suggest that this is not correct. Autistic children may play 'differently' to others but in that respect, they are similar to most other children who all have their own interests, preferences and idiosyncrasies and so all 'play differently'.

The starting point to working with autistic children in a Playwork context is not that much different from working with any other child – it's about learning their preferences and working on that. Where the difference really lays is within Playwork practice compared to other some approaches. It is these latter differences that this session will highlight asking, how do playworkers do this differently.



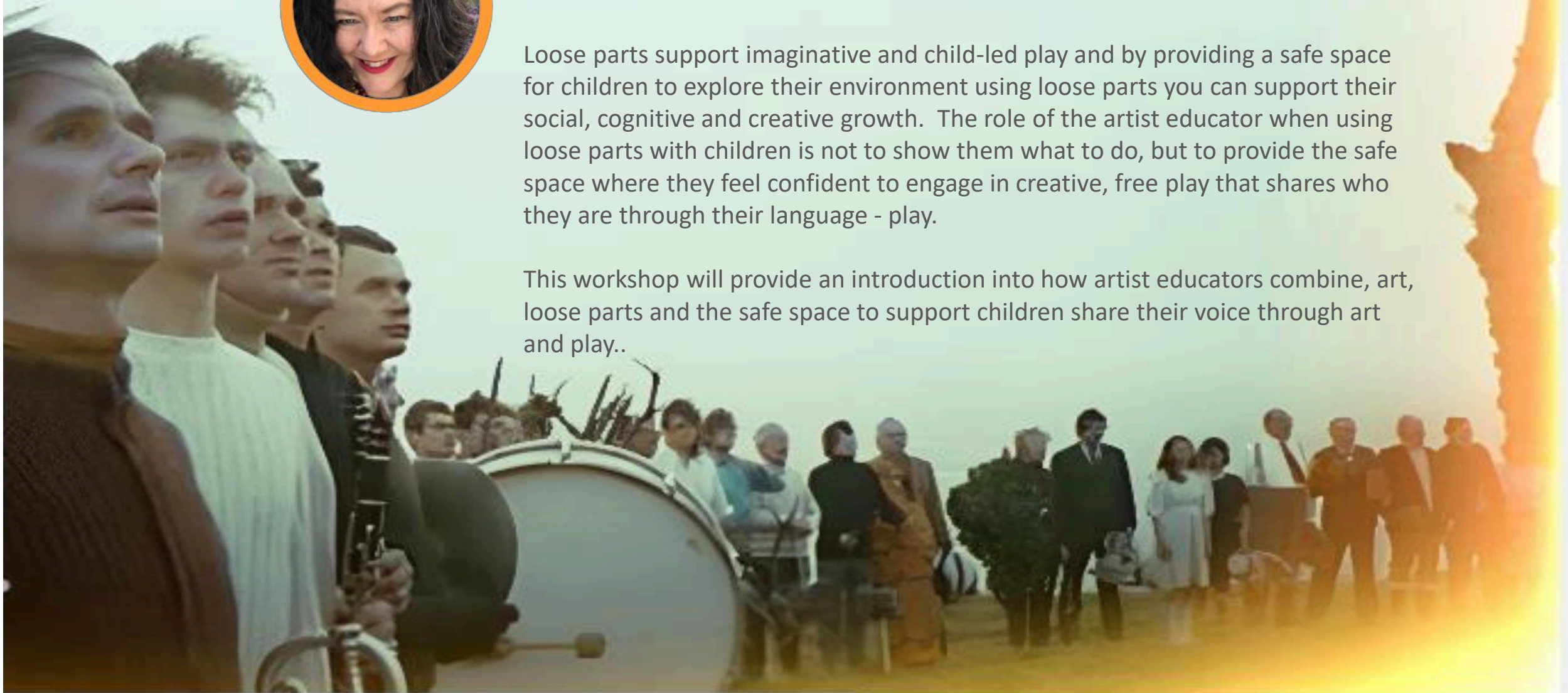


The Art of Loose Parts and the Safe Space

Clare Walton Artist (PhD)

Loose parts support imaginative and child-led play and by providing a safe space for children to explore their environment using loose parts you can support their social, cognitive and creative growth. The role of the artist educator when using loose parts with children is not to show them what to do, but to provide the safe space where they feel confident to engage in creative, free play that shares who they are through their language - play.

This workshop will provide an introduction into how artist educators combine, art, loose parts and the safe space to support children share their voice through art and play..





Ropes, Knots, and Structures

Phil Harris – Aardvark Adventures

One of those fundamental skills that kids themselves develop as they play is the ability to attached things to things, and things to spaces – it's a bit of classical engineering that they need to be able to build they kind of play structures they are looking for. But can you imagine how much more dramatic they could be in their building if they knew how to tie a proper knot?

Join Phil to learn the importance of using ropes and knots as a fixing tool for structures of all kinds, from cubbies to swings, and zip lines to hammocks.

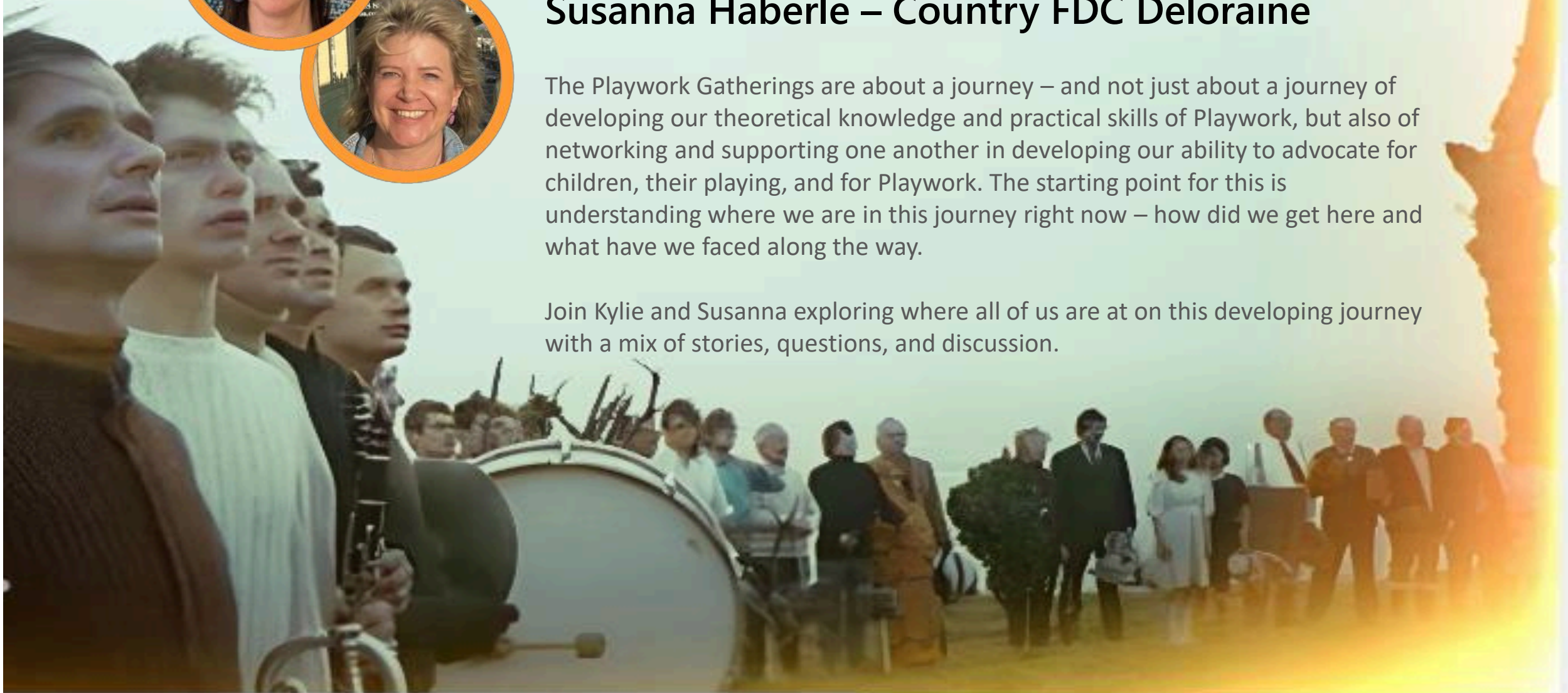


Where am I at on my Playwork journey

Kylie Keane – Keen About & Susanna Haberle – Country FDC Deloraine

The Playwork Gatherings are about a journey – and not just about a journey of developing our theoretical knowledge and practical skills of Playwork, but also of networking and supporting one another in developing our ability to advocate for children, their playing, and for Playwork. The starting point for this is understanding where we are in this journey right now – how did we get here and what have we faced along the way.

Join Kylie and Susanna exploring where all of us are at on this developing journey with a mix of stories, questions, and discussion.



The background of the entire poster is a photograph of a band performing on a beach at sunset. In the foreground, several band members are shown in profile, looking towards the right. They are wearing dark clothing. In the background, a large crowd of people is gathered on the beach, and a large drum is visible. The sky is a mix of orange, yellow, and blue, with the sun low on the horizon. The overall mood is warm and festive.

Tas Playwork gathering 2026

\$399 pp inc all accommodation,
meals, and training sessions

Book at the QR Code or
<https://www.trybooking.com/DIHRO>



Marc Armitage presents a Malarkey Event

facebook.com/marc.armitage.at.play

facebook.com/MalarkeyEvents